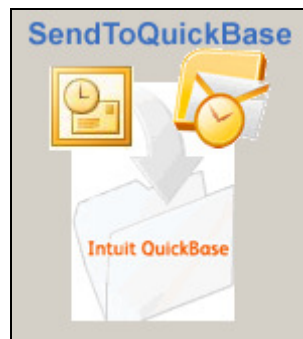


# SendToQuickBase™

## Enterprise Deployment Guide



Copyright © SoftTechExperts, LLC 2007-2010 - All Rights Reserved

SendToQuickBase is a trademark of SoftTechExperts, LLC. Outlook is a registered trademark of Microsoft. QuickBase is a registered trademark of Inuit. All other products mentioned are either trademarks or copyrights of their respective company.

Minimum SendToQuickBase Version: 3.4.328  
Manual Edition: July 7, 2010

---

## Table of Contents

SendToQuickBase Overview.....	1
Enterprise Deployment Overview.....	2
Download SendToQuickBase Setup.....	2
Run Administrative Setup to Extract Files for Deployment.....	2
Deploy Microsoft Visual Studio 2005 Tools for Office Second Edition Runtime (VSTO) .....	3
Customizing the Setup Using an MST (Optional) .....	4
Note About SendToQuickBase License Keys .....	4
Customizing the Add-In Install.....	4
Testing Your MST File.....	7
Deploy SendToQuickBase Outlook Add-In.....	7
Add-In Installer Prerequisites .....	8
SendToQuickBase User Dialogs and Effect of Customizing .....	8
Appendix A – Customizing User Options.....	10

## Table of Figures

Figure 1 - SendToQuickBase Admin - Main Screen .....	1
Figure 2 - SendToQuickBase Outlook Toolbar .....	2
Figure 3 - Administrative Setup Initial Dialog .....	3
Figure 4 - Administrative Setup - Files Extracted .....	3
Figure 5 - Orca New Transform .....	5
Figure 6 - Orca Customize .....	6
Figure 7 - Orca Generate Transform.....	7
Figure 8 - Outlook Add-In MSI Installer Initial Dialog.....	8
Figure 9 - Welcome Screen .....	9
Figure 10 - Login Dialog.....	9
Figure 11 - License Key Registration Dialog .....	10
Figure 12 - User Registration Dialog .....	10

---

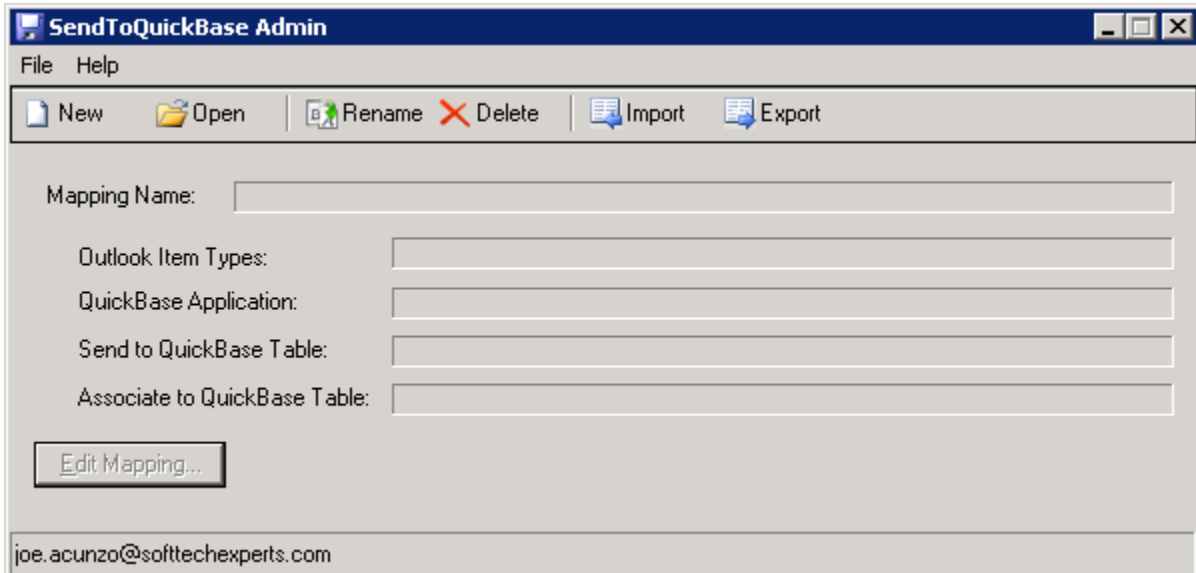
## SendToQuickBase Overview

SendToQuickBase allows you to save your emails, contacts, calendar, tasks and more from Microsoft Outlook into any QuickBase Application. There is a one-time setup to define one or more "mappings" using a Wizard to define where your Outlook data is stored into QuickBase.

SendToQuickBase is comprised of two components:

- SendToQuickBase Admin
- SendToQuickBase Outlook Add-In

The Admin program is a standard Windows desktop application that is used for the one-time setup to create the "mappings". This program is typically only needed by one, or a few, people for this setup. The main dialog for SendToQuickBase Admin can be seen below.



**Figure 1 - SendToQuickBase Admin - Main Screen**

The SendToQuickBase Outlook Add-In displays a new toolbar in Outlook itself and provides the ability to save the data using the defined mappings. The Add-In is used day-to-day by users to save emails, contacts, calendar, etc. to QuickBase.

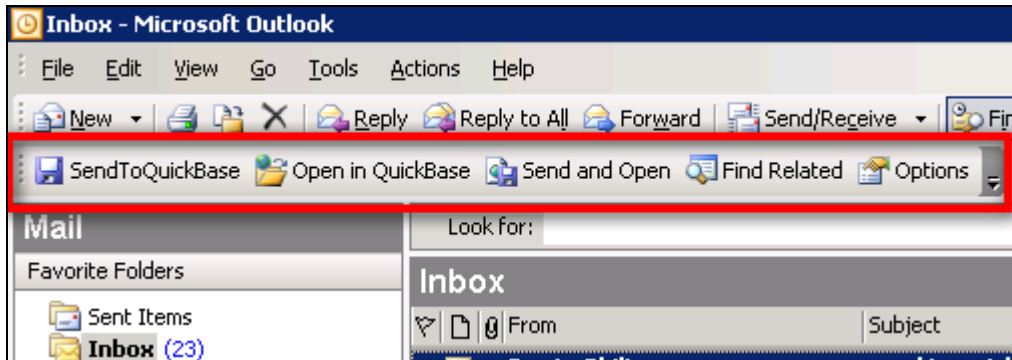


Figure 2 - SendToQuickBase Outlook Toolbar

## Enterprise Deployment Overview

The following steps must be taken to deploy SendToQuickBase Outlook Add-In:

1. Download the SendToQuickBase setup program.
2. Run an Administrative Setup to extract the necessary files for deployment.
3. Optionally customize the setup using a standard Microsoft transform (MST).
4. Deploy Microsoft Visual Studio 2005 Tools for Office Second Edition Runtime.
5. Deploy SendToQuickBase Outlook Add-In.

The Outlook Add-In installer is an MSI that installs just the SendToQuickBase Add-In. Since it is a standard MSI installer package, various tools can be used, such as LANDesk and others, to deploy the Add-In to numerous users' computers over your network without having to be present at each computer.

Also, since the Add-In installer is a standard MSI, a Microsoft "transform" (MST file) may be created to customize some of the behavior of the setup. (More details on customization may be found later in this document.)

Each of the deployment steps is covered in detail below.

### ***Download SendToQuickBase Setup***

The latest SendToQuickBase installer can be found here:

<http://www.softtechexperts.com/sendtoquickbasedownload.html>

The program downloaded is named SetupSendToQuickBaseVn.exe where *n* is the major version number (e.g. SetupSendToQuickBaseV3.exe for version 3.x).

### ***Run Administrative Setup to Extract Files for Deployment***

Running an Administrative Setup extracts the necessary files to deploy just the SendToQuickBase Outlook Add-In (not the SendToQuickBase Admin program, use the regular setup to install that also). Use the following command line to run an Administrative Setup:

```
SendToQuickBaseVn.exe -a
```

Where  $n$  is the major version number (e.g. SetupSendToQuickBaseV3.exe for version 3.x).

**Note:** You must have version 3.2.304 or higher of SendToQuickBase to perform an administrative setup.

Using the -a command line switch results in the dialog shown below.

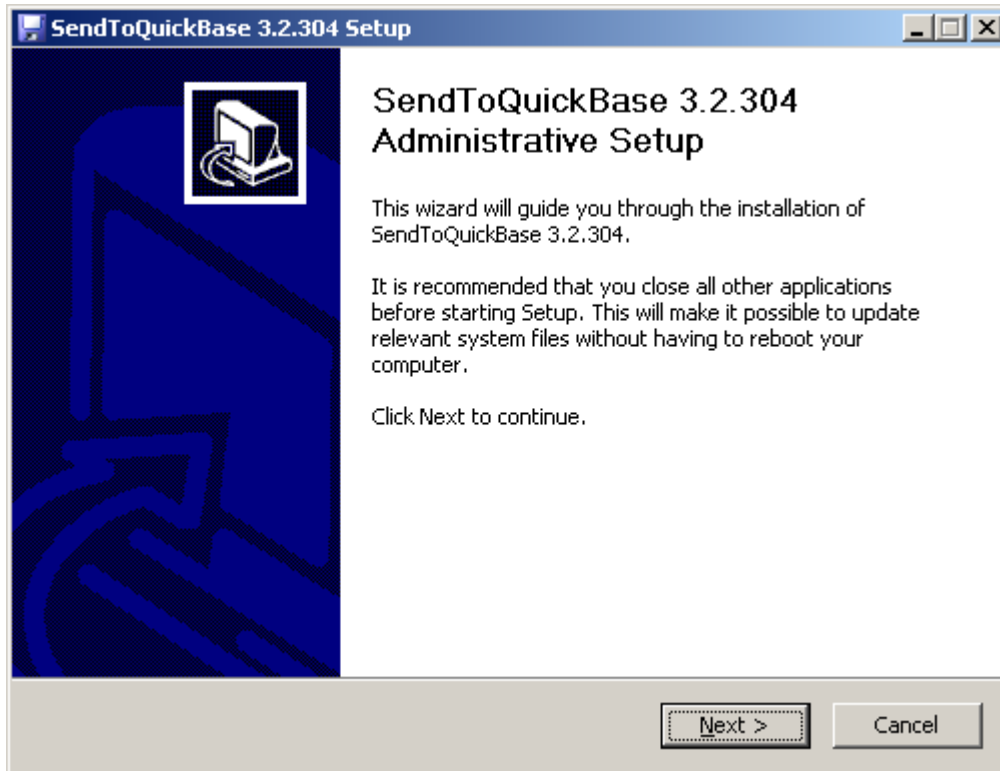


Figure 3 - Administrative Setup Initial Dialog

After completion, the following files will be available.

Note: The file sizes and date/times will vary based on the version of SendToQuickBase.

Name	Size	Type	Date Modified
Program Files		File Folder	1/6/2010 2:39 PM
Win		File Folder	1/6/2010 2:40 PM
SendToQuickBaseAddinSetup.msi	1,542 KB	Windows Installer Package	12/16/2009 9:38 PM
vsto.msi	870 KB	Windows Installer Package	1/6/2010 2:39 PM
vstor.exe	1,321 KB	Application	1/6/2009 11:45 AM

Figure 4 - Administrative Setup - Files Extracted

### ***Deploy Microsoft Visual Studio 2005 Tools for Office Second Edition Runtime (VSTO)***

SendToQuickBase Outlook Add-In requires a Microsoft runtime called "Visual Studio 2005 Tools for Office Second Edition" (VSTO). If a computer does not have any other Office Add-Ins that uses this technology, it will be necessary to deploy this to the computer.

There are two options to deploy VSTO – either using vsto.msi or vstor.exe, both of which are extracted during the administrative setup.

vsto.msi requires that no Microsoft Office application be running, such as Outlook, Word, Excel and PowerPoint. *The install fails silently if any one of those programs is running.*

vstor.exe does not have this limitation, and will install properly with any Office application running. Therefore this is the recommended choice. To run it silently, use this command line:

```
vstor.exe /q
```

### **Customizing the Setup Using an MST (Optional)**

Since SendToQuickBase Add-In installer is a standard Windows Installer-based package, it may be customized using a transform (MST file). There are various customizations you may perform on the SendToQuickBase Add-In MSI, all of which are optional:

- Set your organizations License Key
- Suppress the Registration dialog
- Set your QuickBase Host domain
- Set other user-level options

By providing your organizations License Key, the end-user does not have to enter the key. You can also suppress the display of the Registration screen entirely, as long as the key is provided. If you have the Enterprise version of QuickBase with your own domain, you should specify that.

### **Note About SendToQuickBase License Keys**

The first person in your organization to install and register SendToQuickBase would register as the "Administrator" and a License Key will be assigned. This License Key can be viewed by opening QuickBase in a browser, viewing "My QuickBase" and opening the QuickBase Application "SendToQuickBase License Management".

**Note: The same SendToQuickBase License Key is used for everyone in your organization.**

A certain number of people may register using your License Key by entering their QuickBase login (email or screen name, and password) and the License Key. The number allowed to register is limited by the number of users you purchased for your License. Additional users may be purchased for your License at any time.

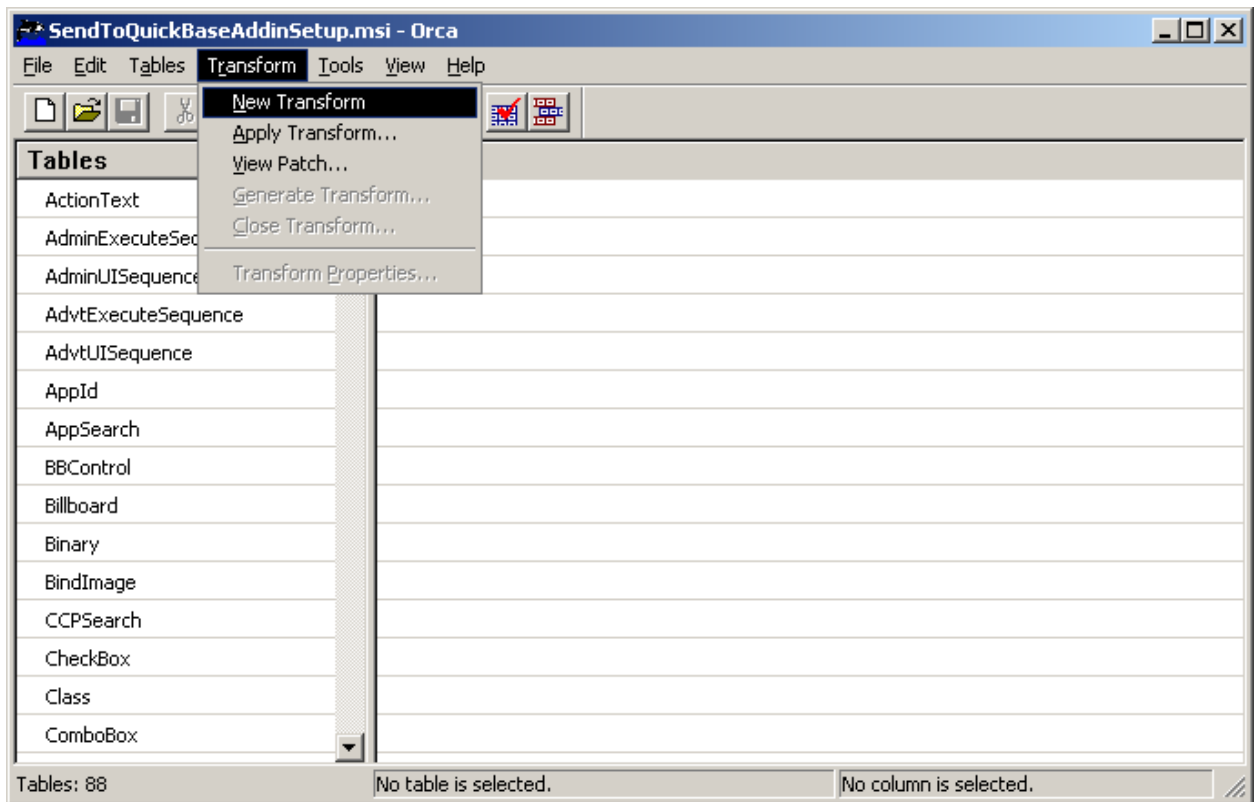
### **Customizing the Add-In Install**

Many commercial and free tools are available to generate a transform used to customize an MSI. Orca is a free, general-use tool available from Microsoft for editing tables in MSI files and generating a transform (MST file) from those changes. The resulting transform can then be applied to the SendToQuickBase installer to include any site-specific customizations. For more information and to download Orca, visit <http://msdn.microsoft.com/en-us/library/aa370557%28VS.85%29.aspx>.

---

To use Orca to customize the setup of SendToQuickBase Add-In install, follow the steps below. (Note: While the procedure described below uses Orca, any tool that can generate an MST file may be used.)

1. Start Orca and from the File menu, choose Open. Browse to the SendToQuickBaseAddinSetup.msi MSI file and open it.
2. After opening the file, the table editor is displayed.
3. From the Transform menu, choose New Transform to start creating a transform.



**Figure 5 - Orca New Transform**

4. Select the Registry Table from the list on the left. There are two Registry values you can change that effect the setup of SendToQuickBase. Their names are ShowRegistrationDialog and LicenseKey.

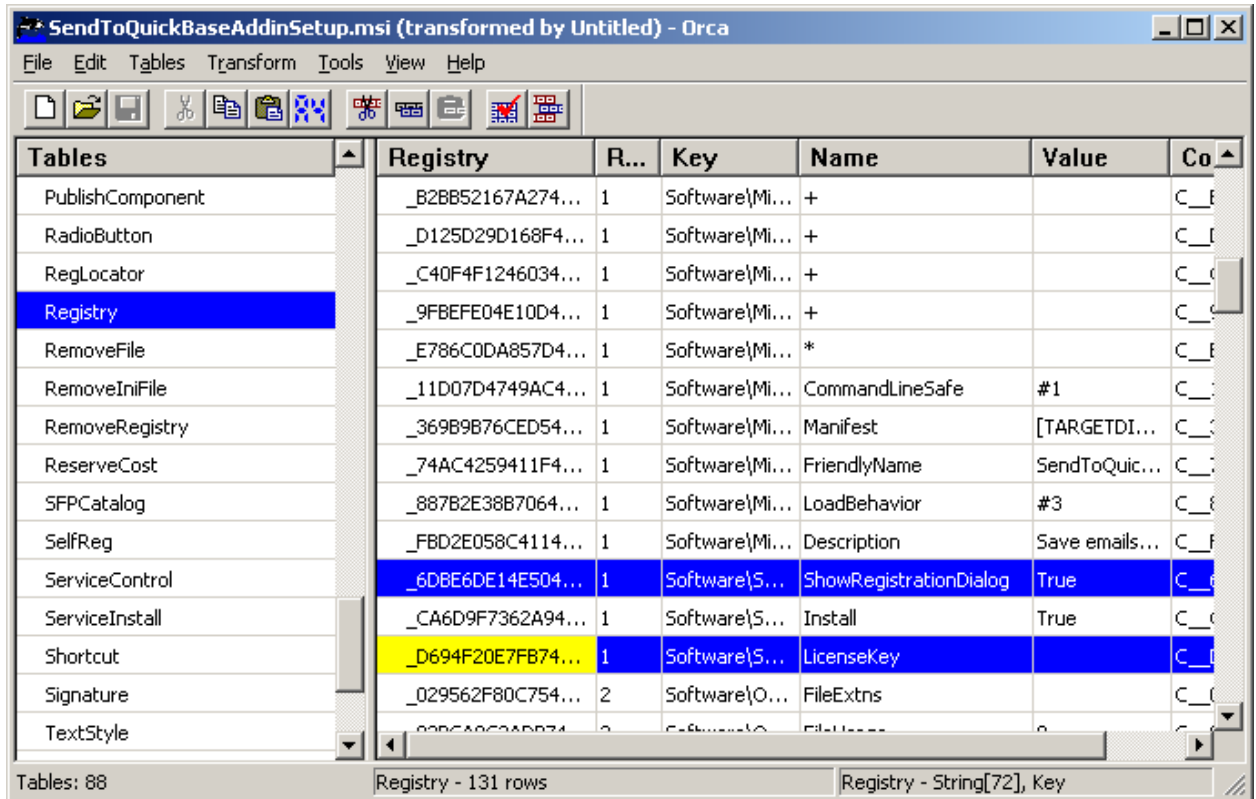


Figure 6 - Orca Customize

Key Name	Value
ShowRegistrationDialog	True or False
LicenseKey	Your key in the form KKKK-KKKK-KKKK-KKKK
QBHost (new String)	https:// <i>YourCompany</i> .quickbase.com

The QBHost value should only be set if your organization uses the Enterprise version of QuickBase, and therefore instead of logging into [www.quickbase.com](http://www.quickbase.com), a sub domain is used. This is typically your company name, for example, <https://acme.quickbase.com>. This value is displayed on the logon dialog in the Host edit control.

To set the QBHost value, it must be added to the Registry section. For instructions on how to add it, and many other user options, see Appendix A.

- When all customizations are complete, generate the transform. To do this, from the Transform menu, choose Generate Transform. Choose an appropriate name for the transform and save it in the same location as the `SendToQuickBaseAddinSetup.msi` file.

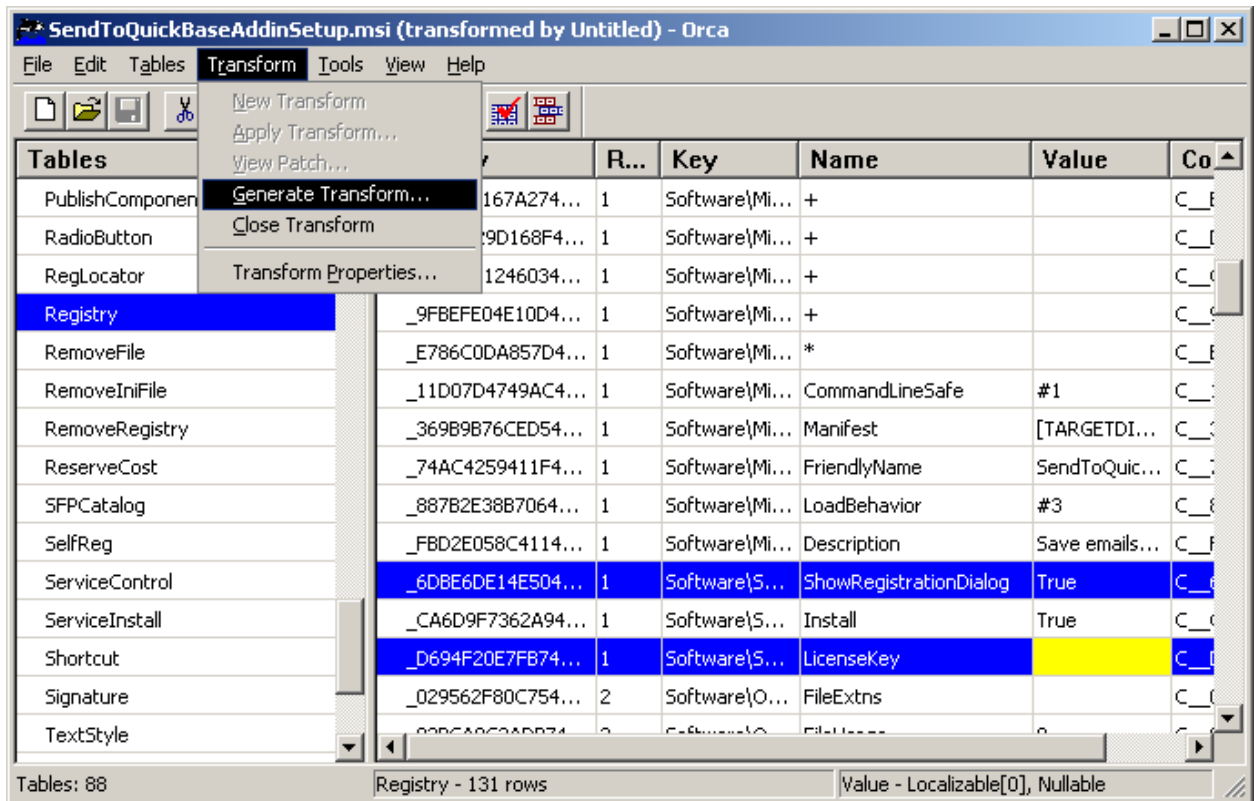


Figure 7 - Orca Generate Transform

That completes the steps to generate the MST transform file.

## Testing Your MST File

Now you may test your customization by using the Microsoft MSI installer program with the command line:

```
msiexec /i X:\MyPath\SendToQuickBaseAddinSetup.msi TRANSFORMS="MyTransform.mst"
```

Where X:\MyPath is the path to the MSI file and MyTransform.mst is the file saved from Orca.

## Deploy SendToQuickBase Outlook Add-In

SendToQuickBase Add-In setup is a standard MSI file named SendToQuickBaseAddinSetup.msi. If run manually, the dialog below is displayed. Deploy this file using whatever tools you normally use.

**Note: A user must be logged in before SendToQuickBaseAddinSetup.msi can be run.**

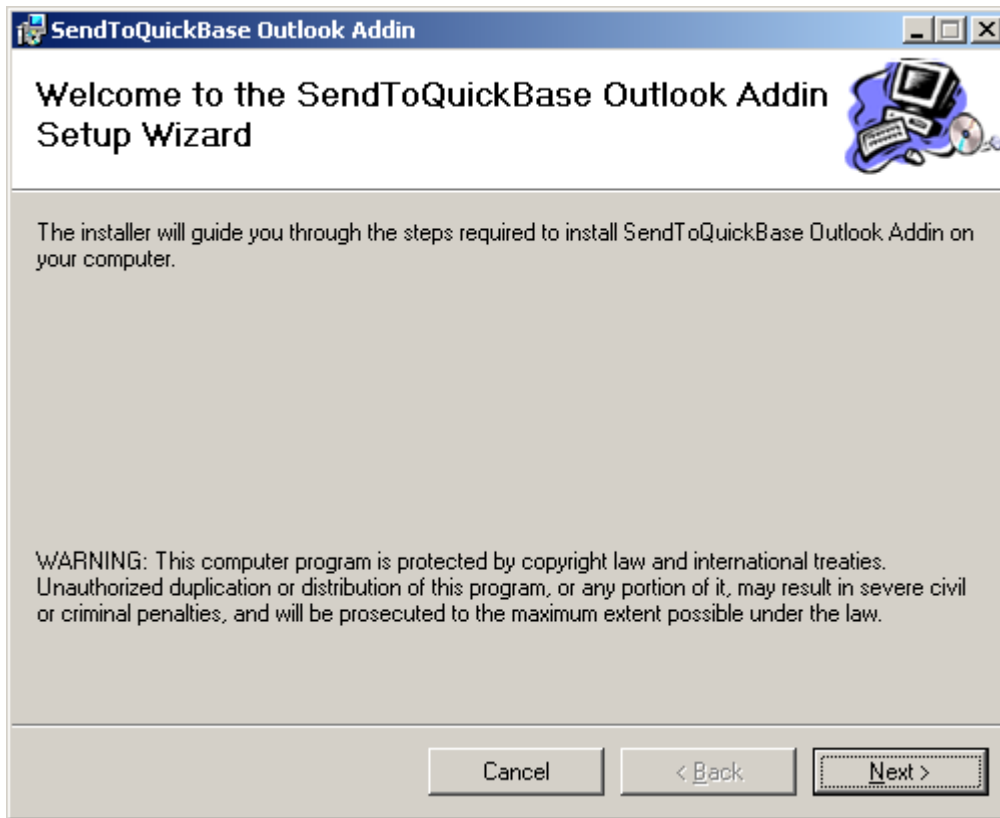


Figure 8 - Outlook Add-In MSI Installer Initial Dialog

### Add-In Installer Prerequisites

The Add-In MSI package has the following prerequisite, that is, these Microsoft components must already be installed on the computer before the SendToQuickBase Add-In is installed and will run properly.

- Windows Installer 3.1 (or higher)
- Microsoft .NET Framework 2.0 (or higher)
- Microsoft Visual Studio 2005 Tools for Office Second Edition runtime (VSTO)

Most computers will have the first two items already installed, however many may not have the third item, VSTO, unless other Microsoft Office Add-Ins have been installed. See details in this document on how to deploy VSTO.

### SendToQuickBase User Dialogs and Effect of Customizing

The following sequence of dialogs is displayed after the user restarts Outlook:

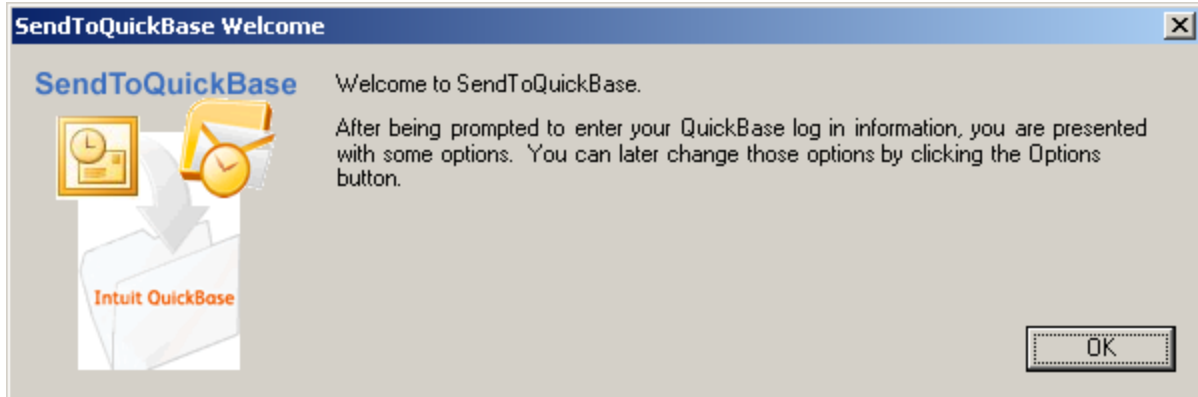


Figure 9 - Welcome Screen

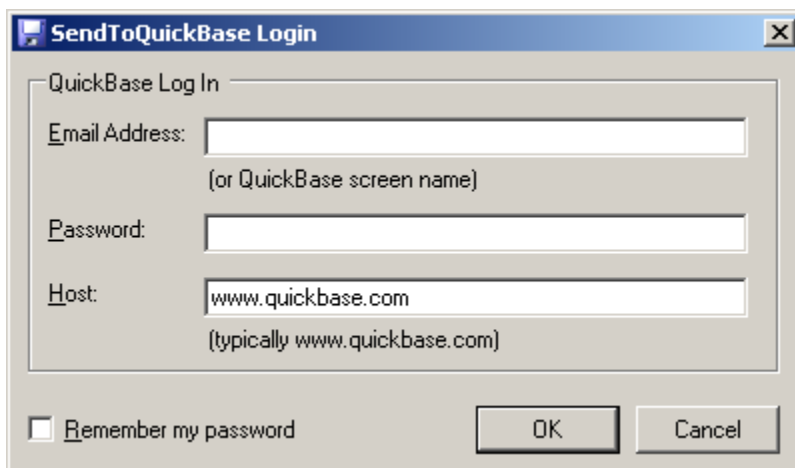


Figure 10 - Login Dialog

Note: If you have set the QBHost Registry value, then this appears on the dialog above.

If you customized the MSI using an MST and entered your organization's License Key, the following dialog will show your Key. If you set ShowRegistrationDialog to False, then this dialog will not be shown.

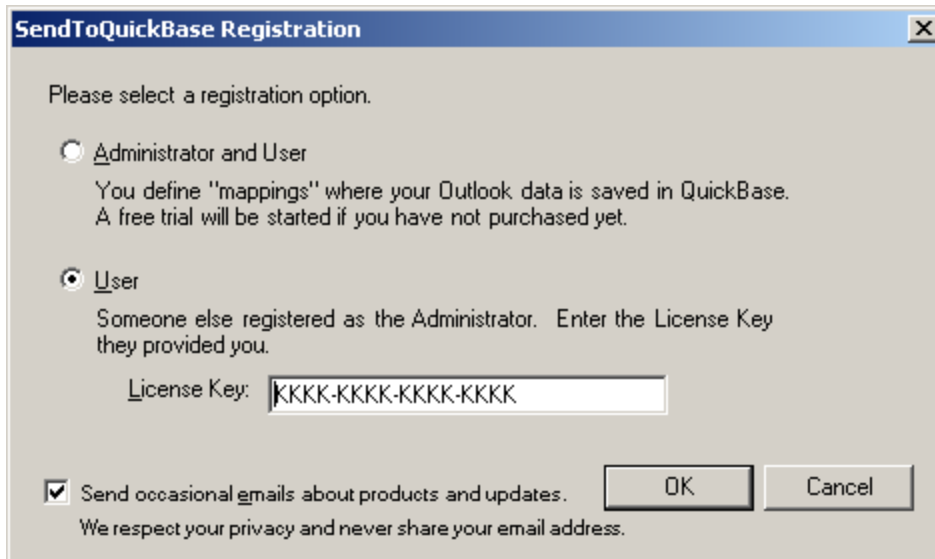


Figure 11 - License Key Registration Dialog

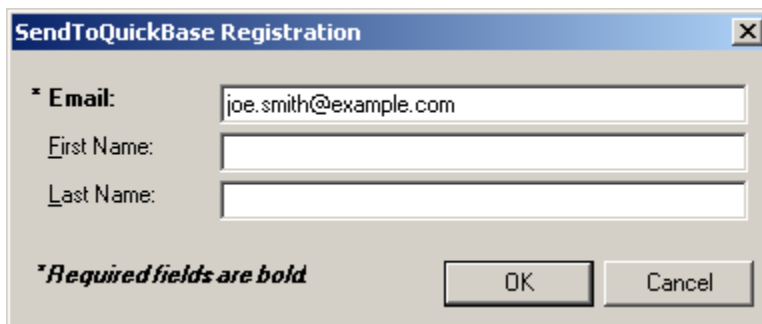


Figure 12 - User Registration Dialog

## Appendix A – Customizing User Options

Below is a list of SendToQuickBase options that the user can set in Outlook using the SendToQuickBase Options button. You can set a different default value for any of these by adding a new row in the Registry section of the transform. Note that you only need to add one of these options if you wish to change the Default Value the user receives after installation has completed.

For each option you wish to set, you must add a new row to the Registry section in the transform. The easiest way to do that is to duplicate an existing row, the LicenseKey entry.

If you are using the Orca program (described earlier in this document), follow these instructions with SendToQuickBaseAddInSetup.msi open in the Orca program and having already started the transform:

1. In the Registry section, right click the LicenseKey row, and select "Copy Row(s)".
2. Right click again, and select "Paste Row(s)".

3. Scroll to the bottom of the list, and you will see the duplicated row. Change the Name from LicenseKey to one of the Key Names in the table below.
4. Set the appropriate Value from the table below.

Lastly, don't forget to generate the transform.

Key Name	Option in GUI	Values	Default	Comments
AllowSaveToMultipleTables	Saving: Allow saving same item to different tables	True, False	False	
CheckForUpdates	Preferences: Automatically check for product updates	True, False	True	Add-In (and Admin program) checks every so often, and if an update is available, the user is asked to download and install the update.
ConfirmSave	Preferences: Show confirmation message after sending	True, False	True	
DeleteAfterSave	Preferences: Delete item after sending to QuickBase	True, False	False	If true, item sent to Deleted Items Outlook folder.
Dupes	Saving: When saving previously saved item	NoDupes, NoDupesPrompt, AllowDupes	NoDupesPrompt	NoDupes is update record, NoDupesPrompt is prompt to update record. (Naming is historical, no update feature.)
EmailSignatureIgnoreCase	Email Body: Ignore capitalization in signature	True, False	True	Ignored unless EmailSignatureStrip is True.
EmailSignatureStrip	Email Body: Remove my signature from email body	True, False	False	If True, enables the feature
EmailSignatureToRemove	Email Body: Remove signature specified below	<any string>	<empty string>	Ignored unless EmailSignatureStrip is True.
EmailSignatureUseOutlookSignatures	Email Body: Remove signatures I created using Outlook (recommend)	True, False	True	Ignored unless EmailSignatureStrip is True.
HTTPReceiveTimeout	Preferences: Upload Timeout	Positive integer	30000	In milliseconds, the timeout value for receiving data.
HTTPSendTimeout	Preferences: Download Timeout	Positive integer	30000	In milliseconds, the timeout value for sending data.
HTTPUseTimeouts	No GUI to set this	True, False	False	Must be True otherwise HTTPReceiveTimeout and HTTPSendTimeout are ignored.
OpenAfterSend	Checkbox on dialog when sending new item: Open QuickBase record after save?	True, False	False	If True, acts the same as when the checkbox is checked.
OpenForEditInQuickBase	Preferences: When opening a QuickBase Record	True, False	True	If False, the record is opened in View mode.
PromptForEmail	Preferences: Show list of records to select from if not found when sending	True, False	True	

Key Name	Option in GUI	Values	Default	Comments
QBHost	Logon dialog: Host edit control	www.quickbase.com or an Enterprise domain string	www.quickbase.com	If using the Enterprise version of QuickBase, you should set this value. It is of the form <i>https://YourCompany.quickbase.com</i> . For example, <i>https://acme.quickbase.com</i> .
QuickStart	Preferences: Quick Start	True, False	False	
RememberPassword	Logon dialog checkbox	True, False	False	
SaveAttachments	Preferences: Save attachments when sending to QuickBase	True, False	True	
SaveMultiple	Preferences: If multiple records match on send, save a copy with all of them	True, False	False	
SaveReplies	Email Body: Include replies within email body	True, False	True	
SendEmailOption	Preferences: When sending or saving a new item	AlwaysSend, PromptToSend, IfCtrlKey, DoNotSend	PromptToSend	AlwaysSend is "Send to QuickBase if match exists".
ShowEmailDomainMatches	Preferences: Only include records with the same domain in the email address	True, False	False	Ignored unless PromptForEmail is True.
VerboseLogging	Preferences: Verbose Logging (Used to assist Support diagnose a problem.)	True, False	False	